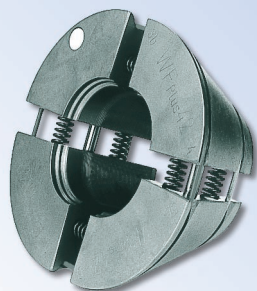
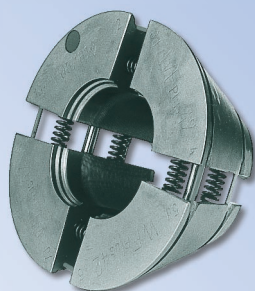


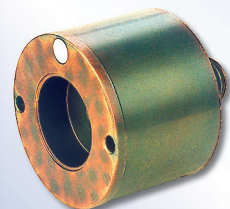
**Tools for reshaping machine  
WALFORMplus M-WF385X**



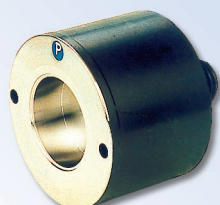
Clamping jaws for  
WALFORMplus  
steel St 37.4/52.4



Clamping jaws for  
WALFORMplus  
stainless steel 1.4571



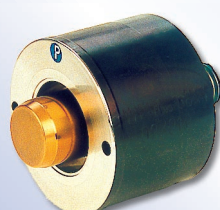
Reshaper for  
WALFORMplus  
steel St 37.4/52.4  
without internal support



Reshaper for  
WALFORMplus  
stainless steel 1.4571  
without internal support



Reshaper for  
WALFORMplus  
steel St 37.4/52.4  
with internal support



Reshaper for  
WALFORMplus  
stainless steel 1.4571  
with internal support

**WALFORMplus with captive seal**

Pipe OD	Tube wall thicknesses [mm] which can be used – Stainless steel (1.4571)								
	1	1,5	2	2,5	3	3,5	4	5	6
6	+								
8	+								
10	+								
12	+								
15		●	●						
16			●	●					
18			●	●					
20			●	●					
22			●	●					
25				●					
28			●	●	●				
30				●	●				
35					●				
38						●			
42							●		

Stainless steel hydraulic tubes. Material 1.4571 (X6CrNiMoTi 17122), type 'm' to DIN 17458, dimensions and tolerances to DIN 2391, part 1-C.

**WALFORMplus with captive seal**

Pipe OD	Tube wall thicknesses [mm] which can be used – Steel (St 37.4/52.4)								
	1	1,5	2	2,5	3	3,5	4	5	6
6	+								
8	+								
10	+								
12	+								
15		●	●	●					
16			●	●					
18			●	●					
20			●	●					
22			●	●					
25				●					
28			●	●	●				
30				●	●				
35					●				
38						●			
42							●		

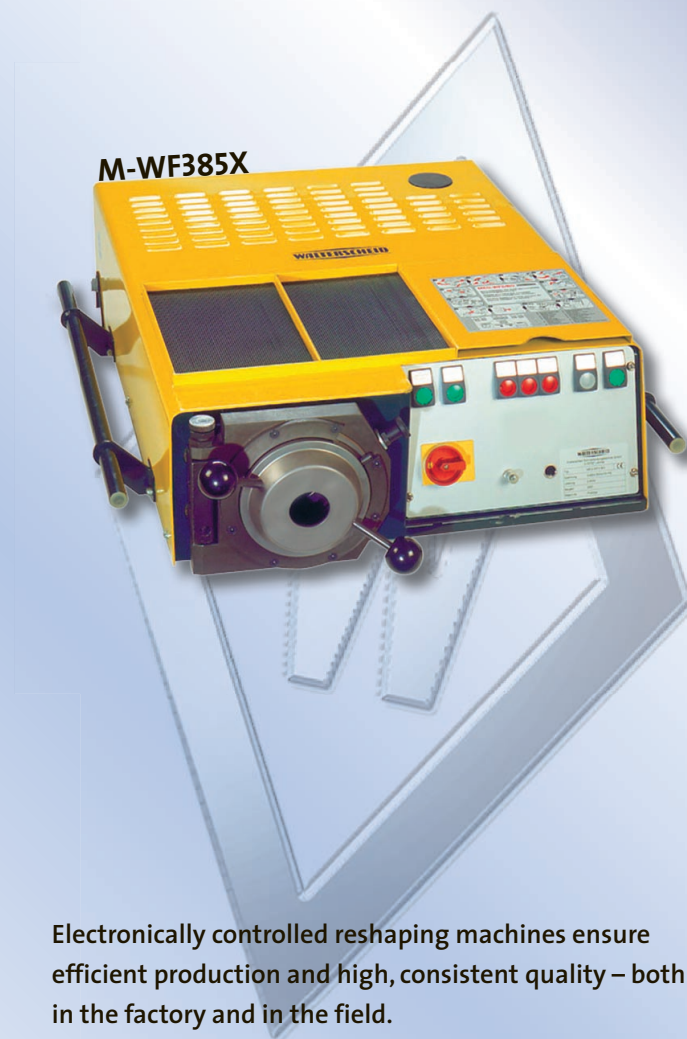
Commercial hydraulic tube, material St 37.4 according to DIN 1630, NBK-3. Dimensions and tolerances according to DIN 2391-C.

- Shaping without internal support
- Shaping with internal support
- +

**Machine for WALFORMplus**

Precise reshaping – Safe assembly

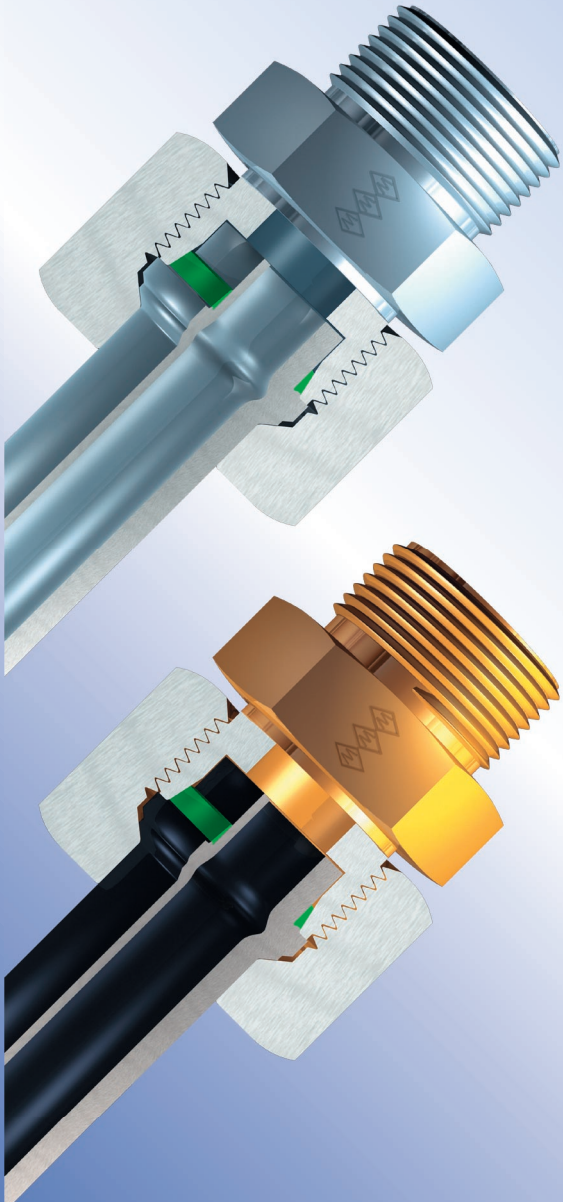
One machine for all materials:  
WALFORMplus in steel and stainless steel!



Electronically controlled reshaping machines ensure efficient production and high, consistent quality – both in the factory and in the field.

## WALTERSCHEID M-WF385X and M-WF385X/BO assembly machines

For reshaping steel and stainless-steel tubes with outside diameters from 6 to 42 mm. Simply by changing the tools, the M-WF385X/BO machine can also be used for flaring WALTERSCHEID 37° SAE flare tube fittings up to 60.3 mm.



### *Short cycle times*

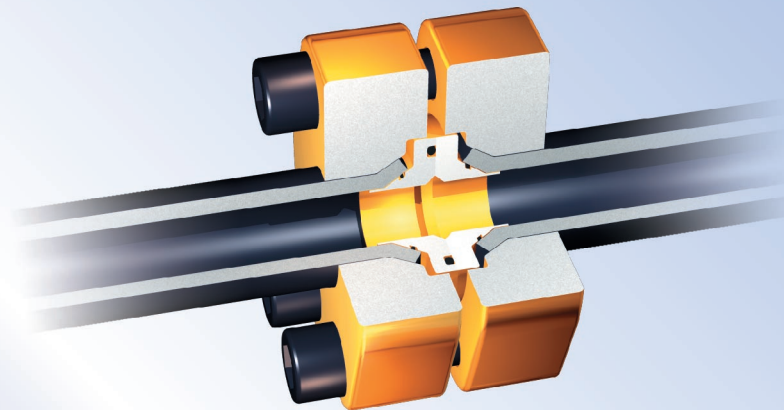
- Just 5 to 8 seconds for each reshaping operation
- Short tool-changing times of less than 30 seconds

### *Maximum safety*

- Two-hand operation throughout
- Secured clamping jaw segments, no switching of clamping elements

### *Highly convenient operation*

- Brief operating instructions with pictogram on every machine
- Labelled operating elements
- Indicator lamp for errors
- Easy cleaning of the tool mount
- Colour coding for steel or stainless-steel tools
- Reliable function thanks to automatic phase detection



### *Long service life*

- Compact, robust design due to integrated cooler
- Supporting mandrels are mounted in floating bearings and adapt to permissible tube tolerances. Minimises wear.
- Specially coated supporting mandrels for stainless-steel reshapers



**WALTERSCHEID**  
Rohrverbindungstechnik GmbH  
Hauptstraße 150  
53797 Lohmar / Germany  
Telefon +49 (0) 2246 12-0  
Telefax +49 (0) 2246 12-33 00  
www.gknwrv.com  
wrv.info@walterscheid.gknplc.com

